

Gagne's hierarchy of learning

1st semester/paper code-103

By:-Mrs.Rinki Kumari

Deptt.of education

MMHA&PU,PATNA

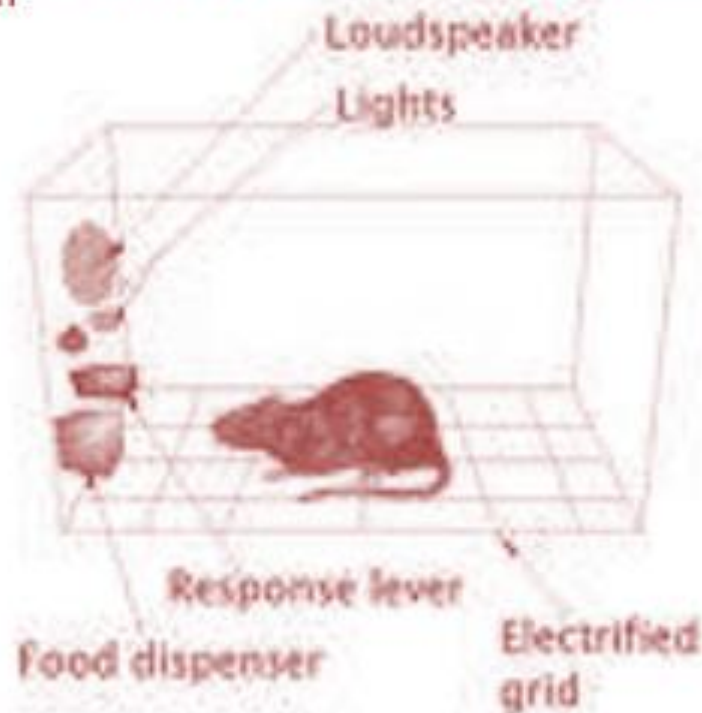
Signal learning

- ▶ General emotional response to a signal
- ▶ Involuntary reflex action of classical conditioning type

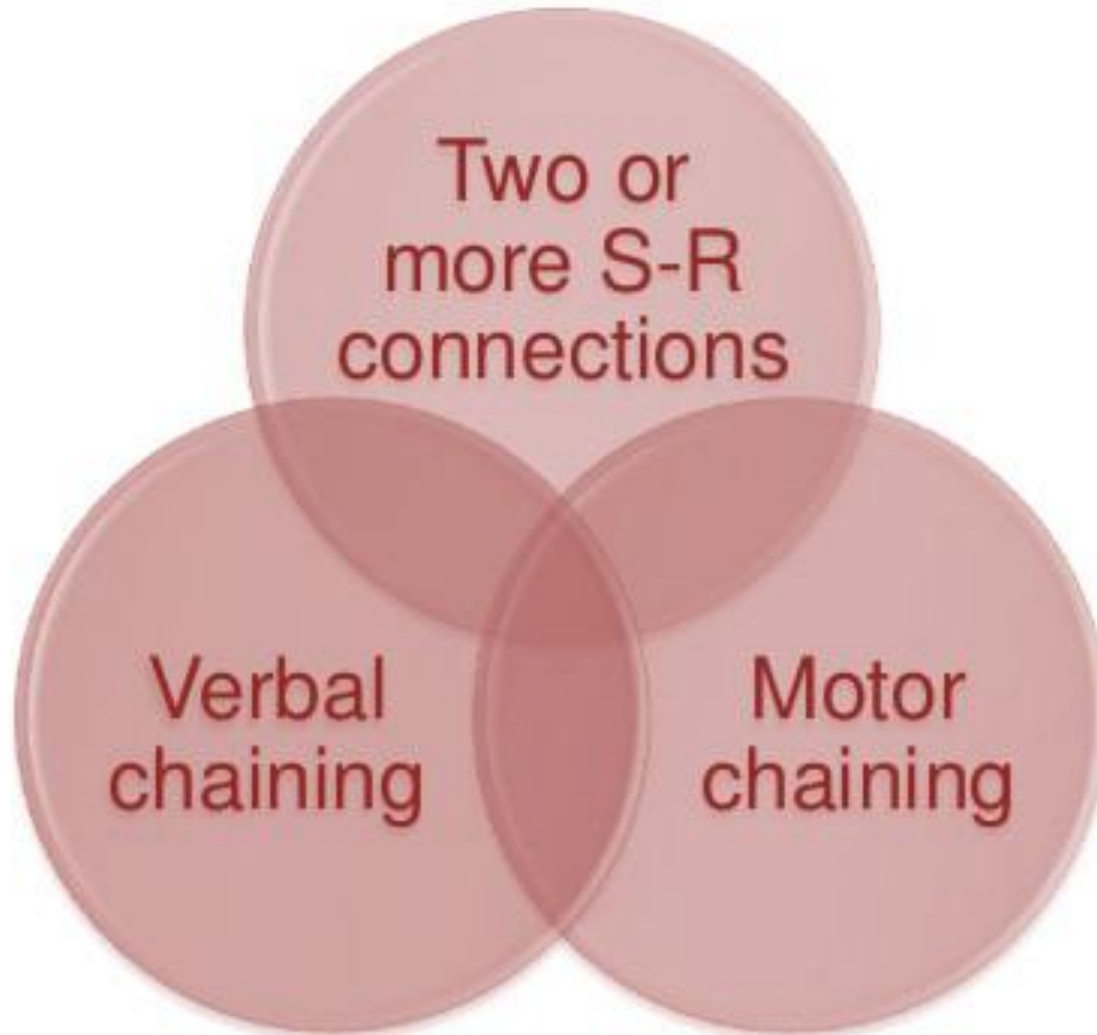


S-R learning

- ▶ Voluntary precise response of operant conditioning type
- ▶ Instrumental learning through reinforcement



Chaining



Verbal Association

Cat.....



Multiple Discrimination



Concept Learning

- ▶ Response to stimuli that a class of objects share in common
- ▶ Able to generalize to a variety of conditions
Eg birds, fruits etc



Rule Learning

Learning of Principles

Chaining of two or more concepts



Problem Solving

Higher order of learning

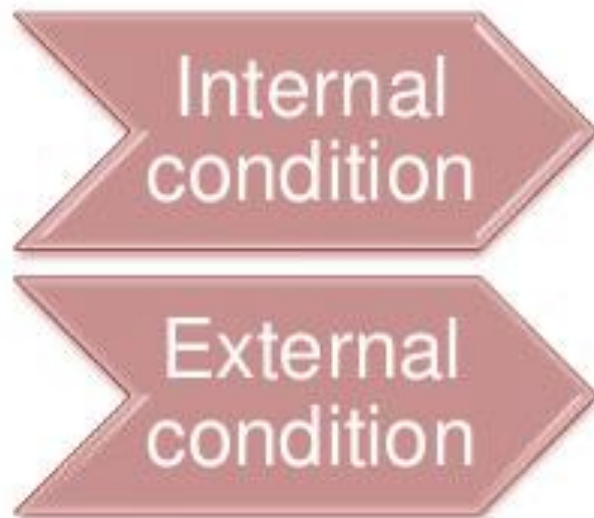
Able to identify the essentials of a solution

Able to combine the principles

Sudden solution-repetition will add nothing



Events or Conditions of Learning



Educational Implications

- ▶ The teaching learning activities should be so arranged that it should go in accordance with the mental abilities of the learner at each level of the learning hierarchy.
- ▶ The formal education should be planned hierarchically on the basis of the increasing complexity of the different types of learning so that what is acquired at one grade act as a foundation for learning in the subsequent grades.
- ▶ Teacher should ensure that the learner have acquired the necessary initial state of learning before he is introduced to subsequent level of learning.
- ▶ Due weightage should be given to the learning hierarchy while framing the curriculum.
- ▶ The role of teacher is to plan and control the external events which influence the internal mental processes.
- ▶ A teacher should be a designer and manager of instruction and an evaluator of student learning.

